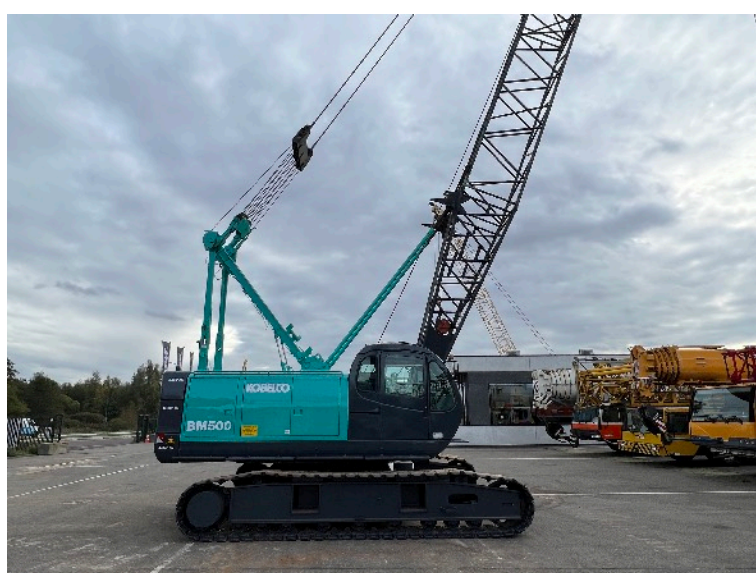




VEMA Crane b.v.  
 Nieuwe Bredase Baan 2  
 4825BP Breda  
 The Netherlands

T +31(0) 162 681050  
 E [sales@vemacrane.com](mailto:sales@vemacrane.com)  
 I [www.vemacrane.com](http://www.vemacrane.com)

# Kobelco BM500 FP-01013



## General information

Make: Kobelco  
 Type: BM500  
 Serial number: FP-01013  
 Year: 1996  
 Hours: 14.500  
 Colour: Original  
 Lifting capacity: 50 ton  
 Shoe width: 760 mm  
 Plates: Flat plates  
 Travel speed: 2.2 km/h

## Super structure

Main boom: 27.0 meter s.t.c.  
 3x 6.1 meter  
 Fixed Jib: Optional 9.1 meter  
 Winches: 2x hoist winch  
 1x boom hoist winch  
 Hook block: 4-sheave hook  
 Counterweight: 17.000 kgs  
 Safe load indicator: PAT Kruger

Boom rated loads in metric tons for 360° working area Crawlers fully extended

Boom length Operating radius (m)	9.1 (30)	12.2 (40)	15.2 (50)	18.3 (60)	21.3 (70)	24.4 (80)	27.4 (90)	30.5 (100)	33.5 (110)	36.6 (120)	39.6 (130)	42.7 (140)	45.7 (150)	48.8 (160)	51.8 (170)	Boom length Operating radius (m)
3.5	50.0	50.0	50.0													3.5
3.8	50.0	50.0														4.0
4.0	49.0	48.9	48.8	41.8												4.0
5.0	35.1	35.0	35.0	34.9	34.8	29.7										5.0
6.0	26.4	26.4	26.3	26.3	26.2	26.2	26.0	23.8								6.0
7.0	21.1	21.0	21.0	20.9	20.9	20.8	20.8	20.7	19.6	18.9						7.0
8.0	17.5	17.5	17.4	17.4	17.3	17.3	17.2	17.1	17.1	16.9	15.8					8.0
9.0	14.9	14.9	14.8	14.8	14.7	14.7	14.6	14.6	14.5	14.4	14.4	13.2	13.2			9.0
10.0	14.7	13.0	12.9	12.9	12.8	12.8	12.7	12.7	12.6	12.5	12.5	12.4	12.4	11.9		10.0
12.0		10.1	10.1	10.0	10.0	9.9	9.9	9.8	9.8	9.7	9.7	9.6	9.6	9.5		12.0
14.0			8.3	8.3	8.2	8.2	8.1	8.1	8.0	8.0	7.9	7.9	7.8	7.7		14.0
16.0				7.0	6.8	6.8	6.7	6.7	6.6	6.6	6.5	6.4	6.4	6.3		16.0
18.0					5.9	5.8	5.7	5.7	5.6	5.6	5.5	5.4	5.4	5.3		18.0
20.0						5.0	4.9	4.9	4.9	4.8	4.8	4.6	4.5	4.4		20.0
22.0							4.4	4.3	4.2	4.1	4.1	4.0	3.9	3.8		22.0
24.0								4.3	3.8	3.7	3.6	3.5	3.4	3.3		24.0
26.0									3.8	3.2	3.2	3.1	3.0	2.9		26.0
28.0										2.9	2.8	2.8	2.5	2.5		28.0
30.0											2.5	2.4	2.3	2.1		30.0
32.0												2.2	2.0	1.9		32.0
34.0													2.1	1.8		34.0
36.0														1.7		36.0
38.0																38.0

Working Ranges

